

LRI Emergency
Department LRI.
Emergency Department.
**Grazes and
Abrasions.**
Nurse led discharge.

Assessed by:

Signed:

Date

Time

Patient Details

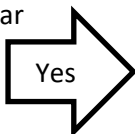
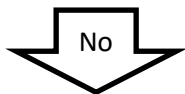
Full Name:

DoB:

Unit number:

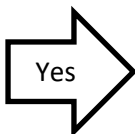
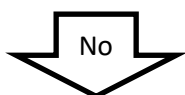
(Use sticker if available)

Is the child under one year
of age?



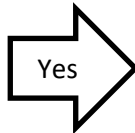
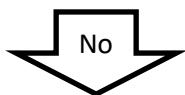
Not suitable for
nurse-led
discharge

Are there any key
concerns from box 1?



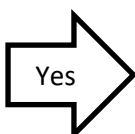
Not suitable for
nurse-led
discharge

Are there any concerns
from box 2?



Not suitable for
nurse-led
discharge

Is the surface area
greater than 1% (more
than the size of the
patient's hand)?



Not suitable for
nurse-led
discharge

Complete discharge checklist and
give wound care advice leaflet.
Task on NerveCentre and move to
injuries for wound care.

Box 1: History

- Re attendance
- Referral from GP
- Safeguarding concerns
- Suspicion of NAI
- Injury caused from a rotating object ? (e.g. treadmill, vacuum cleaner, bicycle wheel / chain)
- Use of drugs or alcohol
- Caused as a result of a medical problem (e.g. seizure / fit?)

Box 2: Examination

- Any other injuries requiring review
- Wound greater than 1% surface area?
- Complicated wound care
- Visible foreign body or suspicion of foreign body?

Box 3: Conditions for nurse-led discharge:

- Child aged 1-18
- Nurse triage trained
- No parental/staff concern
- No evidence of other injuries
- Child given analgesia (if required)
- Verbal advice and wound care information leaflet given
- Safeguarding checklist completed
- Actions documented on NerveCentre
- Discharge letter completed
- Parents happy with discharge from triage

Child discharged by:
Signed:

Wound Care.

Are any of the following features present?

- . Actively bleeding
- . Visible foreign body
- . Base of wound is white or non blanching?
- . Any contamination
- . Features that do not correlate with the reported mechanism
- . Secondary to deliberate self-harm
- . Secondary to underlying medical conditions (e.g. seizure)



Yes

Child needs
clinician
assessment



No

Clean and dress the wound
using aseptic technique

Discharge child with
appropriate wound care
advice

Wound closed by:
Signed: